

Prague, 11 September 2017

The Autumn Journey Leads the Prevention Train to Kralupy nad Vltavou, Prague and Pardubický Region

The successful project of České dráhy “Prevention Train for a Safe Railway” continues in September by its autumn part. It will start in Kralupy nad Vltavou where the Prevention Train will be standing on 13 and 14 September. Then it will go to Prague for three days to be at disposal to students and pupils at Praha-Dejvice Station on 19 – 21 September. This year’s journey of the Prevention Train will end in Pardubický Region: in Letohrad on 26 and 27 September, in Česká Třebová on 3 and 4 October and in Choceň on 5 and 6 October.

The Prevention Train has been organised by České dráhy since 2007. It is designed for pupils of primary schools and students of high schools and training institutions. In ten years, more than 18 thousand of young people from forty cities have visited this train. The national carrier cooperates on this project with well-trying partners: Správa železniční dopravní cesty and its own subsidiary, ČD Cargo.

The Prevention Train is based on unconventional communication with young people which proved to be very useful during the previous years. *“The Prevention Train is one of the most important projects within social responsibility of the national carrier. We regularly show consequences of inconsiderate behaviour of drivers and pedestrians to the students, we remind them the necessity to be attentive in the trackage and on platforms and not to let themselves diverted by cell phones or listening to music in earphones. All of these are extremely risky factors that may lead to an accident which could radically change both their own lives and lives of their relatives”*, says Mr. Michal Štěpán, member of the Board of Directors of České dráhy.

„Správa železniční dopravní cesty as the railway infrastructure manager supports all prevention projects improving the public’s awareness how to behave on the railway. Any injury or fatality on the railway being caused by simple ignorance or distraction is quite unnecessary. Visitors of the Prevention Train can also learn how not to behave on trains, at stations or on the railway in general from the film “You won’t make it!” Hundreds of students and pupils have already seen this film during prevention lectures in primary and high schools. This year, our Marketing Department has been preparing its second part which – I hope – will be equally successful”, says Mr. Jiří Svoboda, Deputy Director General of SŽDC.

The Prevention Train is dispatched by České dráhy and Správa železniční dopravní cesty together with other partners.



What will visitors find in the Prevention Train?

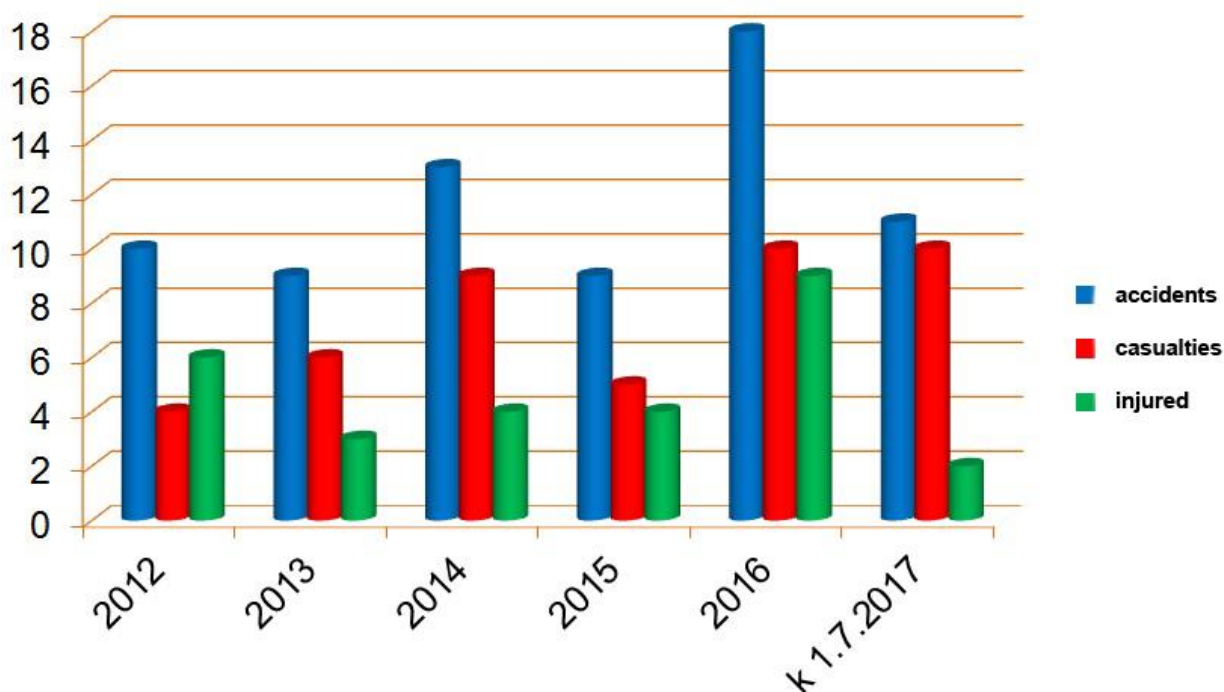
The first car is a special cinematic coach designed to project a quite new film. The acted documentary called *“You won’t make it!”* acquaints the public with basic safety rules on the railway and in its surroundings, it provides information about risky behaviour and it draws attention to its possible fatal consequences. The film is very emotional and effective because the individual stories are based on real-life exceptional events on the

railway. The motivation for the creation of the film “You won’t make it!” was mainly shocking statistics of **the** railway accidents.

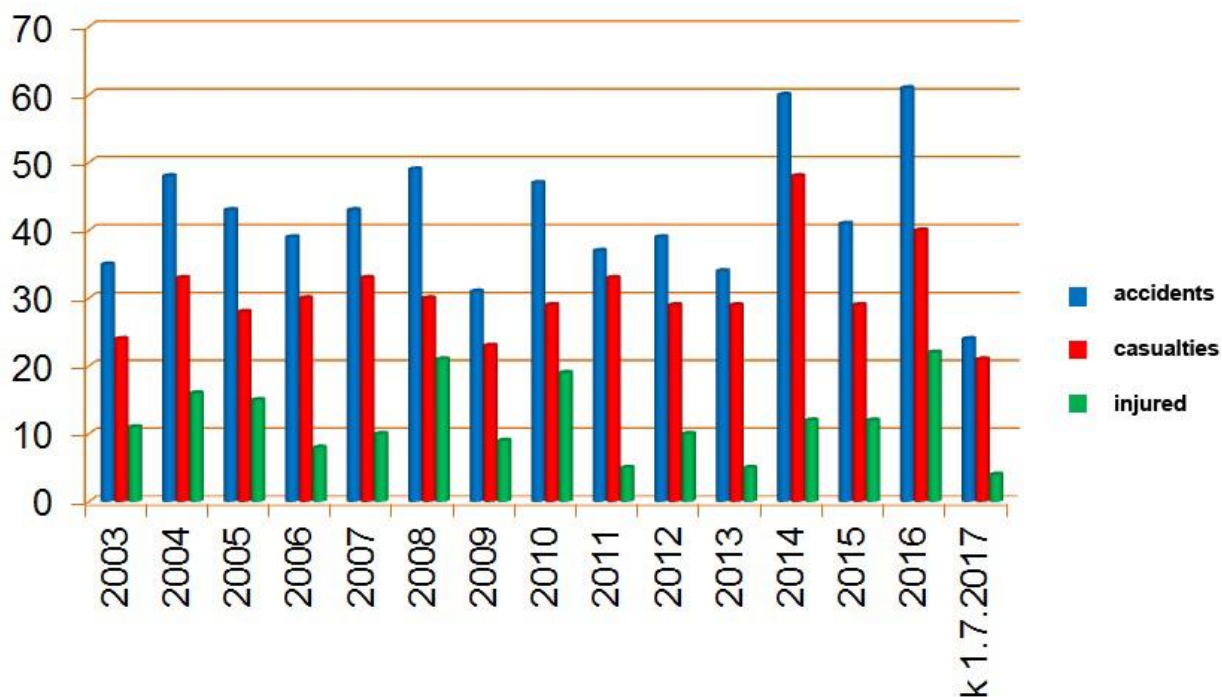
In the second conference car, visitors can discuss with experts dealing with accidents on the railway. They will meet investigators of Správa železniční dopravní cesty and the Czech Police. The car is equipped with modern technology so that visitors will see and hear more than words only.

At the third station, a fire truck and firemen from SŽDC are waiting for students to show their work. There will be not only theory in talk but pupils and students can also try providing first aid by themselves. They will experience an authentic simulation of saving a human life. Railway firemen with long-year experience in action during railway accidents will give attention to participants.

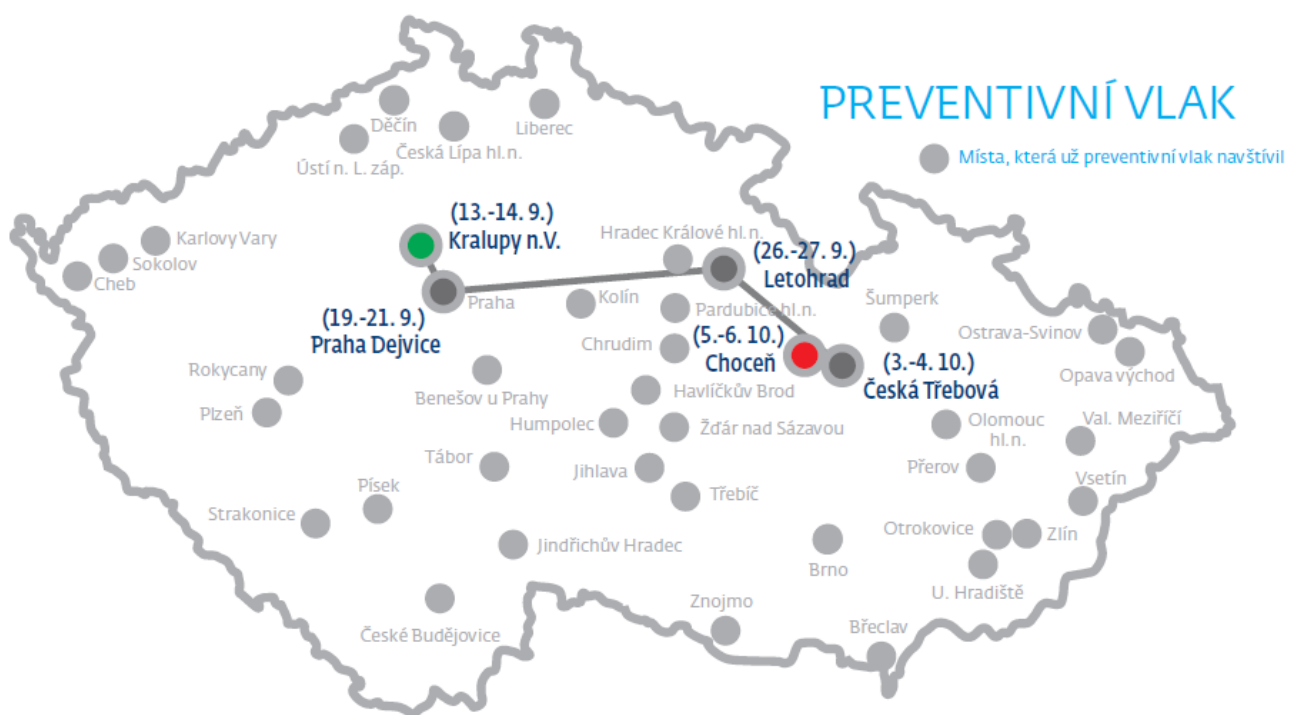
The projections are taking place at railway stations mentioned above always from 8:15 a.m. to 2:15 p.m. A cycle for a single group lasts approximately 110 – 120 minutes. Students and pupils board the Prevention Train upon a reservation made in advance. The entry is free; all costs of this prevention event are borne by the project organizers.



Course of train collisions with people in the Czech Republic



Course of train collisions with people in Středočeský Region



Mgr. Radka Pistoriusová

ČD Spokesperson

Phone: +420 725 032 134; 972 522 004

ČD Press Department Hotline for Exceptional Situations: +420 724 977 822, press@cd.cz